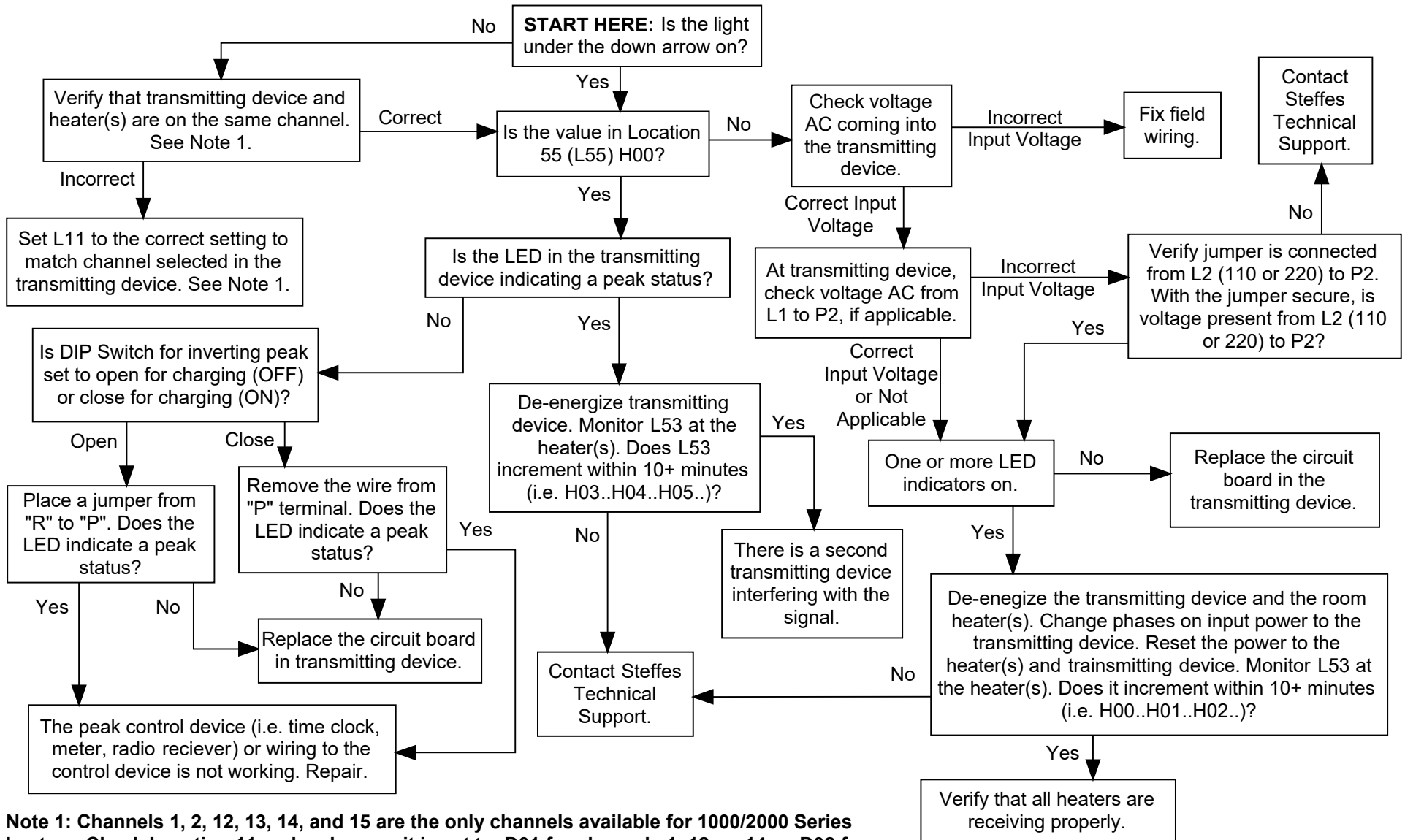


Heater Stays in Off-Peak (C) - Power Line Carrier (PLC) 1000/2000 Series

When using Power Line Carrier (PLC) to control 1000 and 2000 Series heaters, they will switch from a "P" for peak times to a "C" for off-peak (charge) times based on the information they receive from the transmitting device. Verify that the peak control device is sending an off-peak signal. If the heater does not switch from a "C" to a "P" even when the peak control device is placed in a peak mode, the problem can be in the peak control device, wiring of the peak control device, a problem with the transmitting device, the heater, or interference caused by something in the environment.



Note 1: Channels 1, 2, 12, 13, 14, and 15 are the only channels available for 1000/2000 Series heaters. Check Location 11 and make sure it is set to D01 for channels 1, 12, or 14 or D02 for channels 2, 13, or 15.